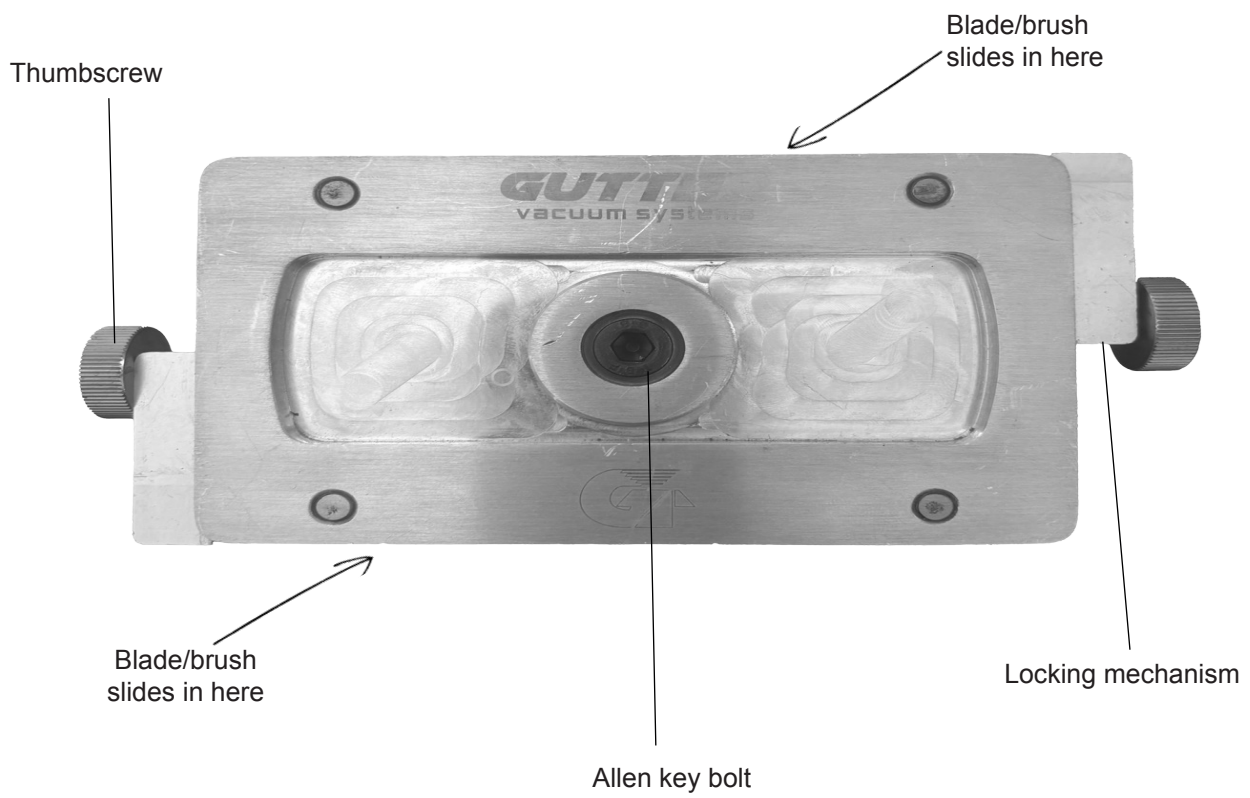


***GVS ROOF SCRAPER HEAD  
KIT GUIDE***

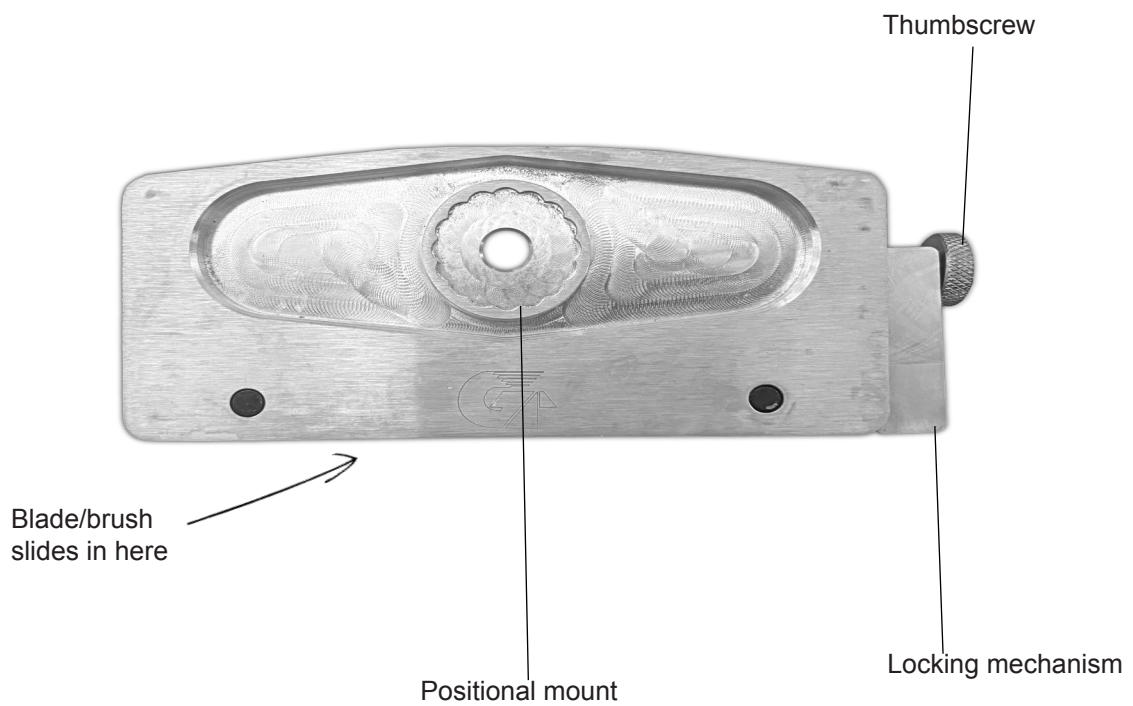


## GVS Double Head



## GVS Single Head

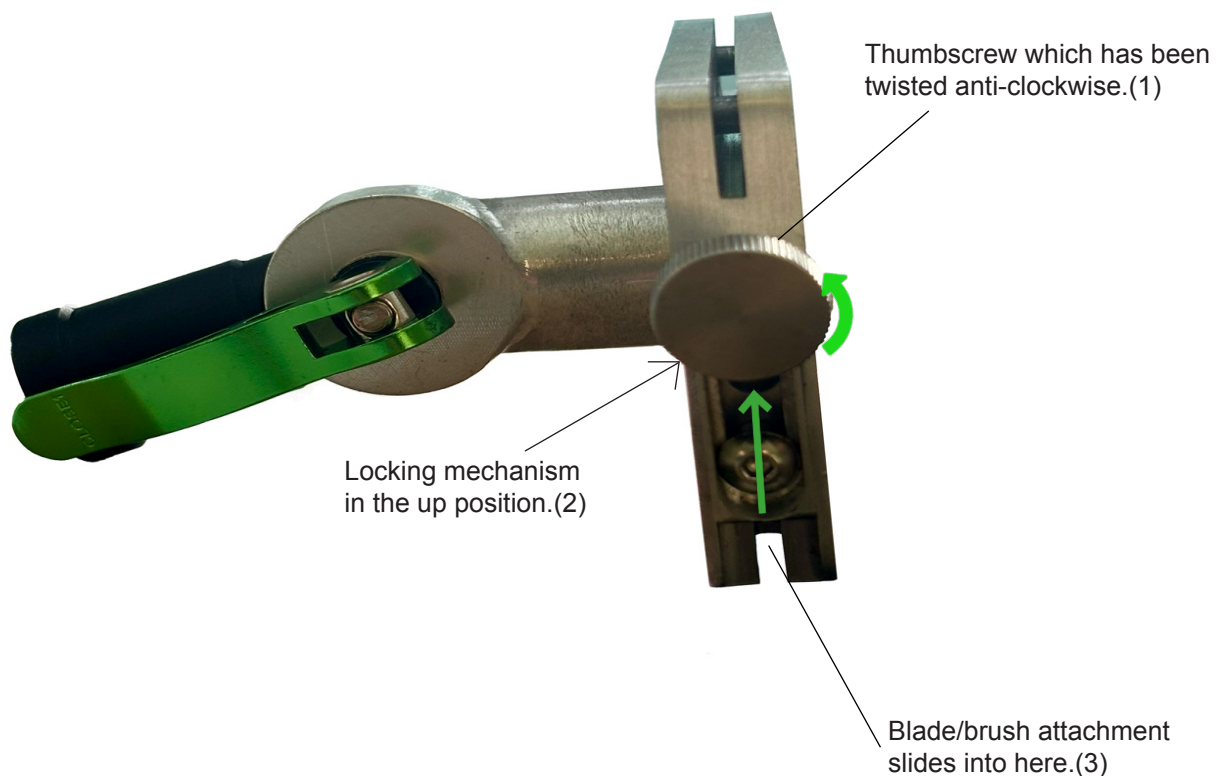
Reverse view



# HOW TO ATTACH YOUR BLADE OR BRUSH

## Single / Double Head

1. Loosen slightly the thumbscrew in an anti-clockwise motion.
2. Once loose, lift the locking mechanism up.
3. Slide your chosen attachment into place.
4. Lower the locking mechanism and tighten the thumbscrew clockwise.
5. The blade/brush will feel secure in the head.
6. Repeat the above steps to change the blade/brush over.

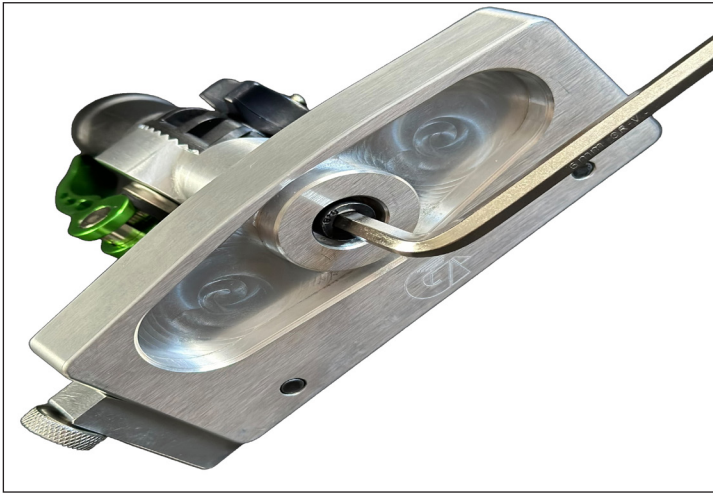


Correct fitment below. This also applies to the double head.



# ADJUSTING THE ANGLE OF YOUR HEAD

To adjust the angle of your head you will need to use the large Allen key.



Place the Allen key into the bolt in the front of the head.

Rotate anti-clockwise to loosen.

Adjust to your suitable angle for scrape.

Re-tighten in a clock-wise motion to secure.



The angle adaptor also allows you to raise or lower your scraper head achieving awkward angles.

